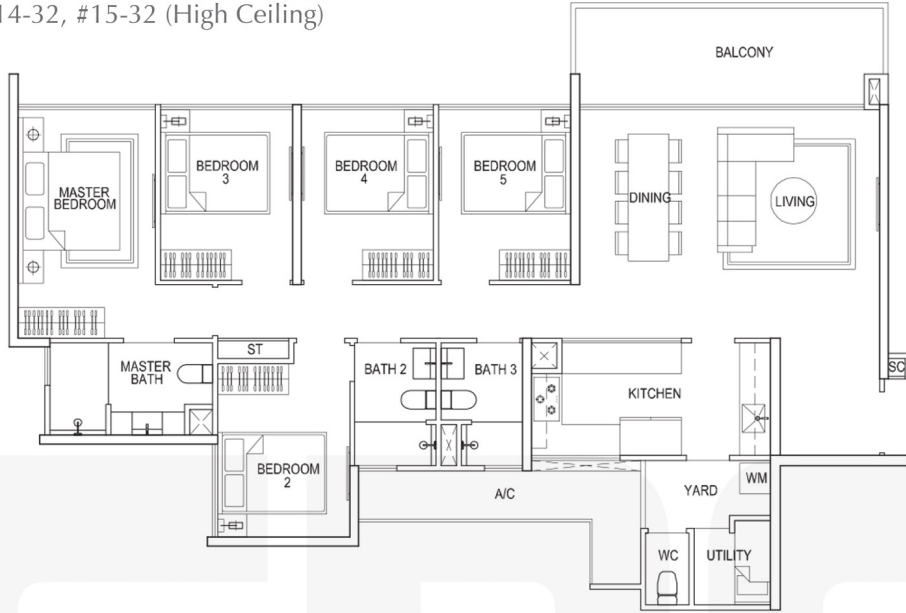


# Floor Plans

## 5-bedroom

### Type E2

148 sq m / 1593 sq ft  
 #02-29 to #14-29, #15-29 (High Ceiling)  
 #02-32 to #14-32, #15-32 (High Ceiling)



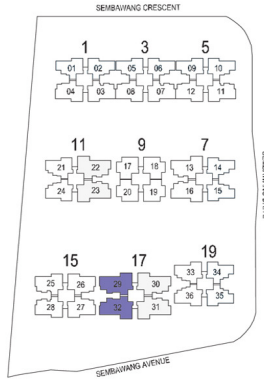
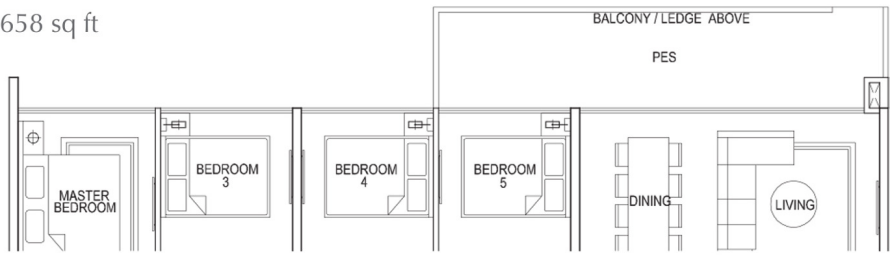
### Type E2a (Partial plan)

159 sq m / 1711 sq ft  
 #01-29



### Type E2b (Partial plan)

154 sq m / 1658 sq ft  
 #01-32



Key plan (Not to scale)

Areas include A/C ledge, balcony and PES. Orientations and facings will differ depending on the unit you are purchasing. Please refer to the key plan. The plans are subjected to change as may be required or approved by relevant authorities. All areas are approximate and subject to final survey. The developer and its agents cannot be held liable for any inaccuracies.