

# 2 - Bedroom

## Type A1

72 sq m / 775 sq ft

#02-04 to #11-04, #12-04 (High Ceiling)

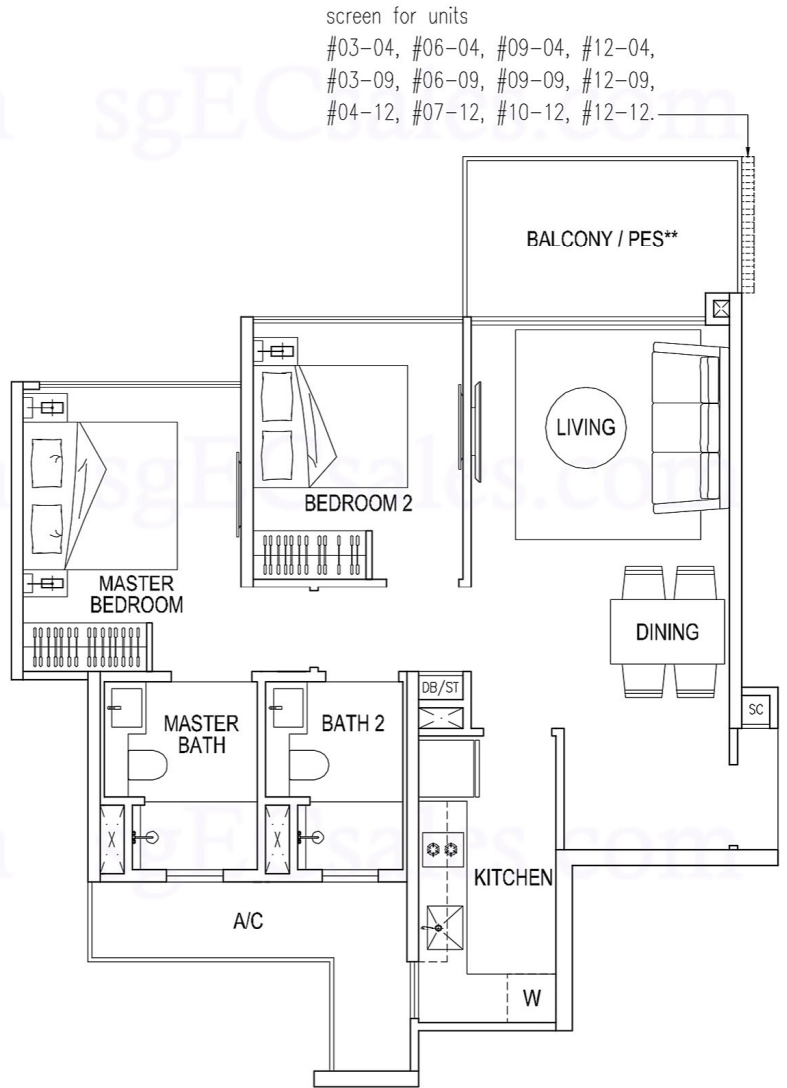
#02-09 to #11-09, #12-09 (High Ceiling)

#02-12 to #11-12, #12-12 (High Ceiling) \*

## Type A1a

72 sq m / 775 sq ft

#01-04



## Type A1a (Partial plan)

72 sq m / 775 sq ft

#01-09



\* mirror - image

\*\*1st storey units PES  
in lieu of Balcony

Area includes A/C ledge, balcony and PES where applicable. Orientations and facings will differ depending on the unit you are purchasing. Please refer to the key plan. The plans are subjected to change as may be required or approved by relevant authorities. All areas are approximate and subject to final survey. The developer and its agents cannot be held liable for any inaccuracies.

