

2 - Bedroom

Type A3

71 sq m / 764 sq ft

#02-13 to #11-13, #12-13 (High Ceiling)

#02-44 to #11-44, #12-44 (High Ceiling)

Type A3a

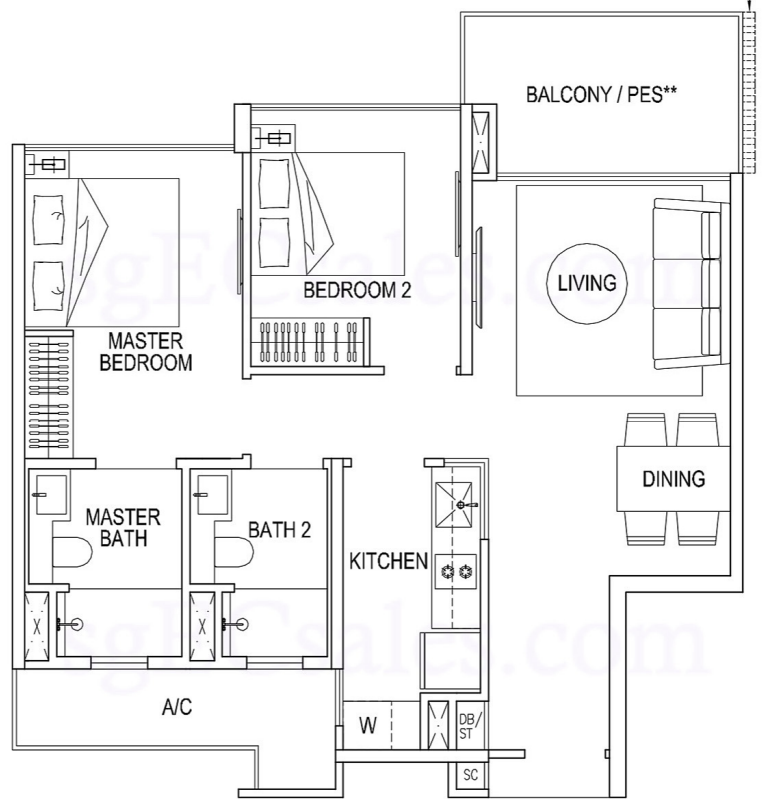
71 sq m / 764 sq ft

#01-44

screen for units

#04-13, #07-13, #10-13, #12-13,

#01-44, #04-44, #07-44, #10-44, #12-44.



* mirror – image

**1st storey units PES
in lieu of Balcony

Area includes A/C ledge, balcony and PES where applicable. Orientations and facings will differ depending on the unit you are purchasing. Please refer to the key plan. The plans are subjected to change as may be required or approved by relevant authorities. All areas are approximate and subject to final survey. The developer and its agents cannot be held liable for any inaccuracies.

